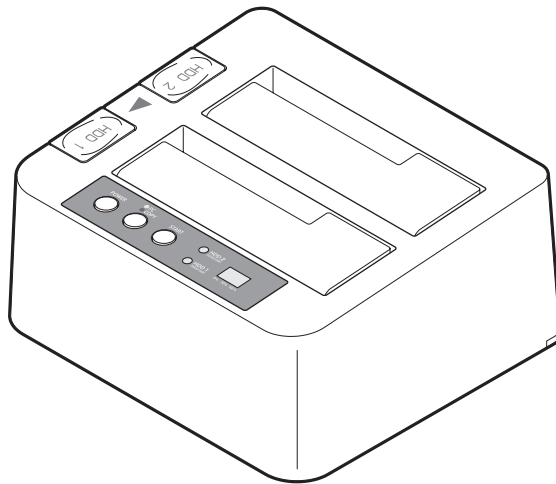


HDD Stand Converter Clone Plus

CROS2EU2CP User Manual

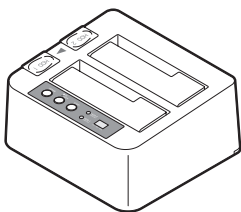


【Features】

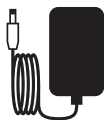
Part no. : CROS2EU2CP
Model name : HDD Stand Converter Clone Plus
Interface : Device...SATA I/II 1.5Gbps/3.0Gbps
Host ... [USB]USB2.0 [eSATA]SATA II 3.0Gbps
Connector : USB TYPE-B
Dimension : L143mm x W132mm x H70mm
Weight : 544g (HDD not included)
Humidity : 20% to 80%
Temperature: 5~35° C
Power Adapter: Input... 100V~240V 0.8A
Output... 12V 3A

【Package Contents】

- 1x CROS2EU2CP docking station
- 1x Power adapter
- 1x User manual
- 1x Power cord
- 1x USB 3.0 cable
- 1x eSATA cable



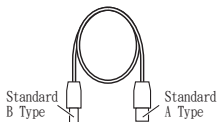
CROS2EU2CP Docking Station



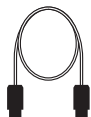
Power Adapter



Power Cord



USB Cable



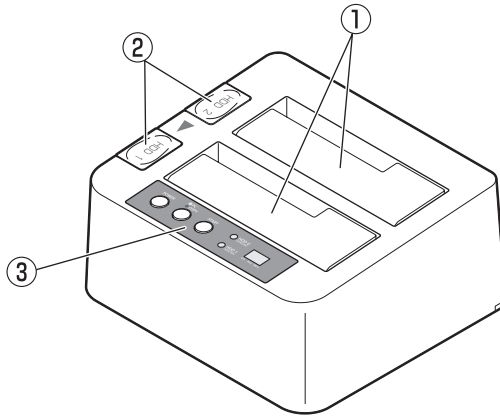
eSATA Cable



User Manual

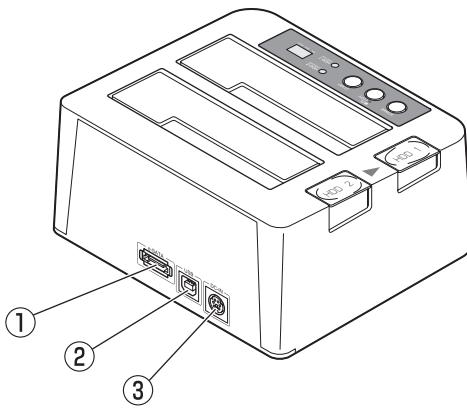
【Hardware Guide】

〈Front〉



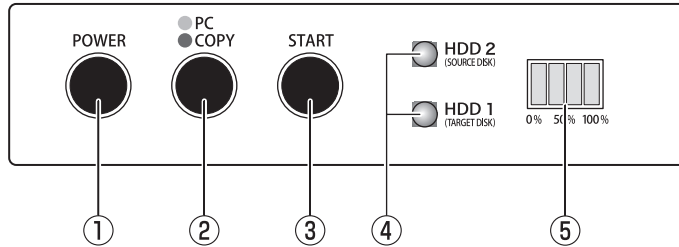
- ① HDD dock slot
- ② HDD release button
- ③ Operation panel

〈Back〉



- ① eSATA port
- ② USB 2.0 port
- ③ Power adapter port

〈Operation Panel〉



- ① Power Switch: When power on, will show blue light.
- ② PC / Copy Mode Switch:
 - PC Mode (Blue light): When CROS2EU2CP connects with PC.
 - Copy Mode (Red light): When power is on, long press the button for 3 seconds. After the LED turn to RED, can begin copy operation.
- ③ Start: Press the button to begin copy operation.
- ④ HDD Status LED: Blue for HDD recognized.
Pink flash for access HDD.
- ⑤ Progress status LED: Copy Mode-25% as a unit to show copy operation progress.
PC Mode- LED light moves around when access HDD.

【HDD/SSD Installation】

■ Before insert the HDD

Please be careful with the static electricity, when insert the HDD. The static electricity might cause the damage to the HDD stand converter.

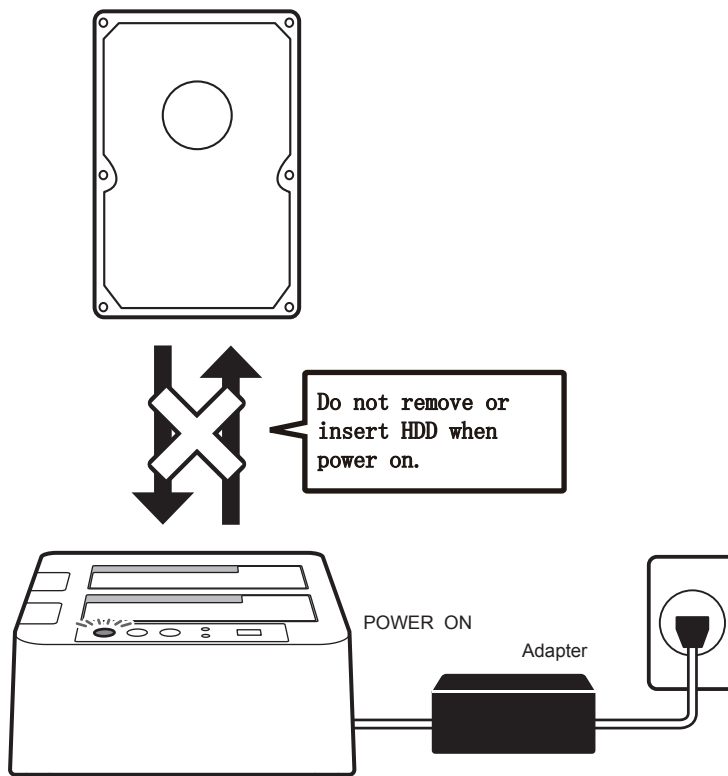
※ Warning!

Please back up the data of the HDD before connecting.

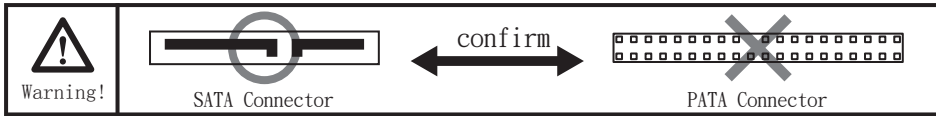
⚠ Warning!

■ Please be careful with the order.

- Insert the HDD before turn on the power.
- CROS2EU2CP does not support hot-swap.
It may cause damage, if the order is incorrect.

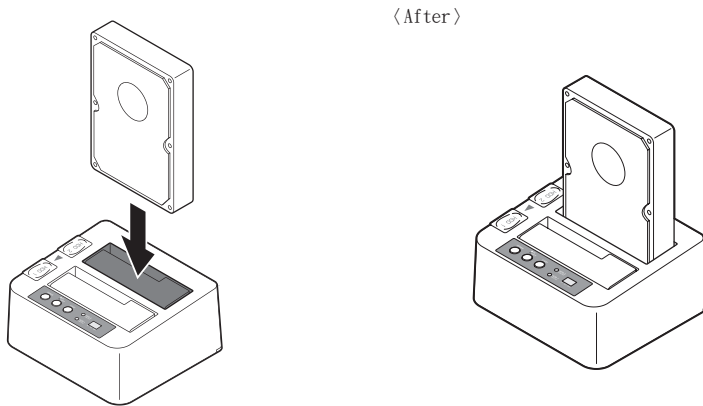


※CROS2EU2CP is for SATA HDD, does not support PATA(IDE) HDD.



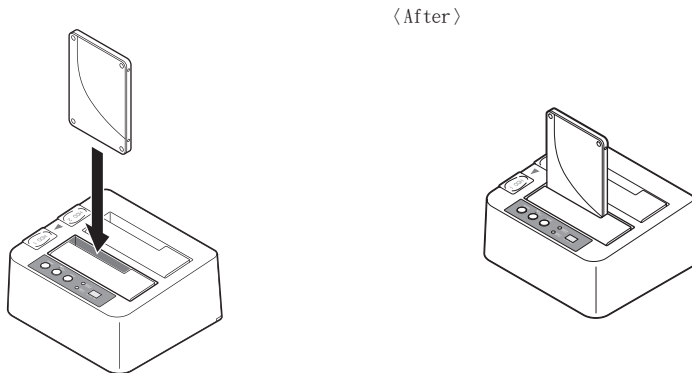
■ 3.5" HDD installation

Insert the 3.5" hard drive into the dock slot



■ 2.5" HDD installation

Insert the 2.5" hard drive into the dock slot



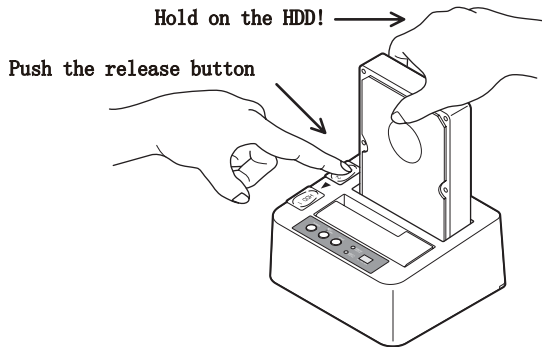
■ Warning !

When install, please notice the correct SATA connector location and direction.
If push too hard, it might cause damage.

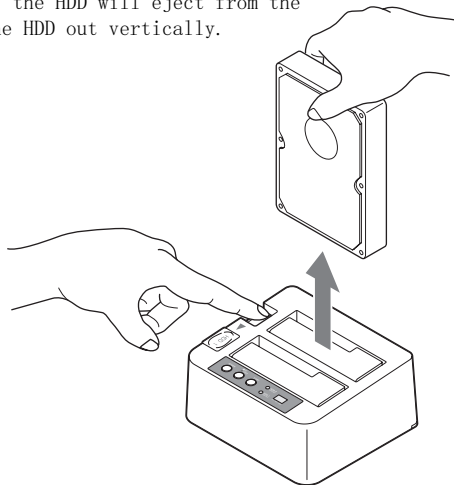
【HDD/SSD Remove】

※ CROS2EU2CP does not support hot-swap plug. Please turn off the power before remove.

1. One hand hold on the HDD, and push the button to release the HDD from the dock.



2. After pushing, the HDD will eject from the docking. Pull the HDD out vertically.

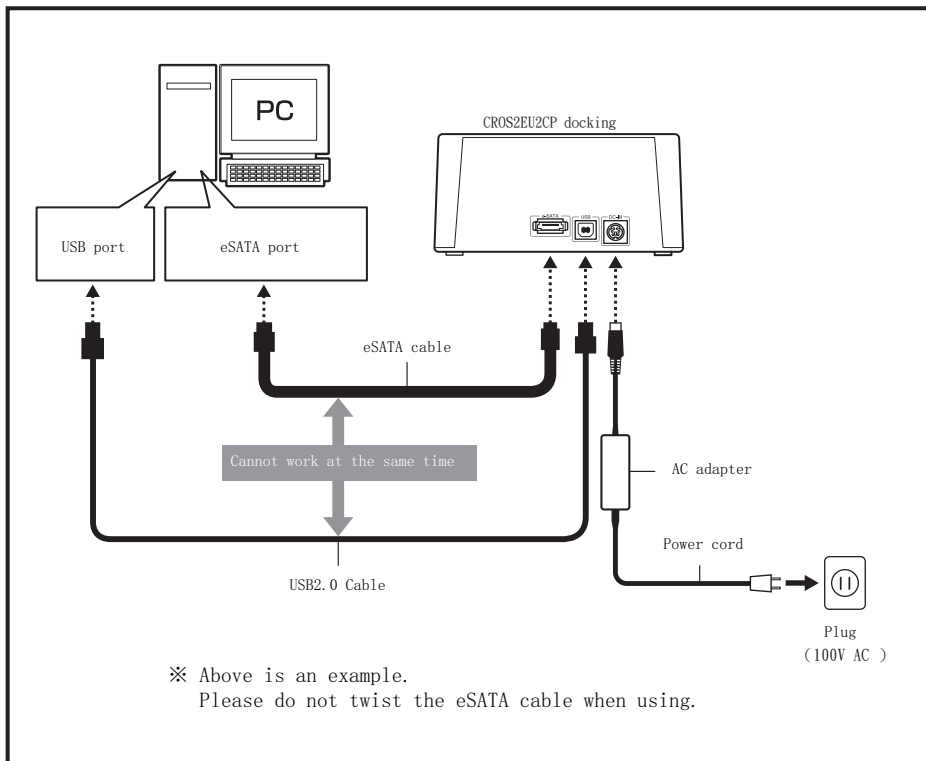


■ Warning !

Must hold on the HDD when remove, or it may cause damage to the SATA connector.

【Connect with PC】

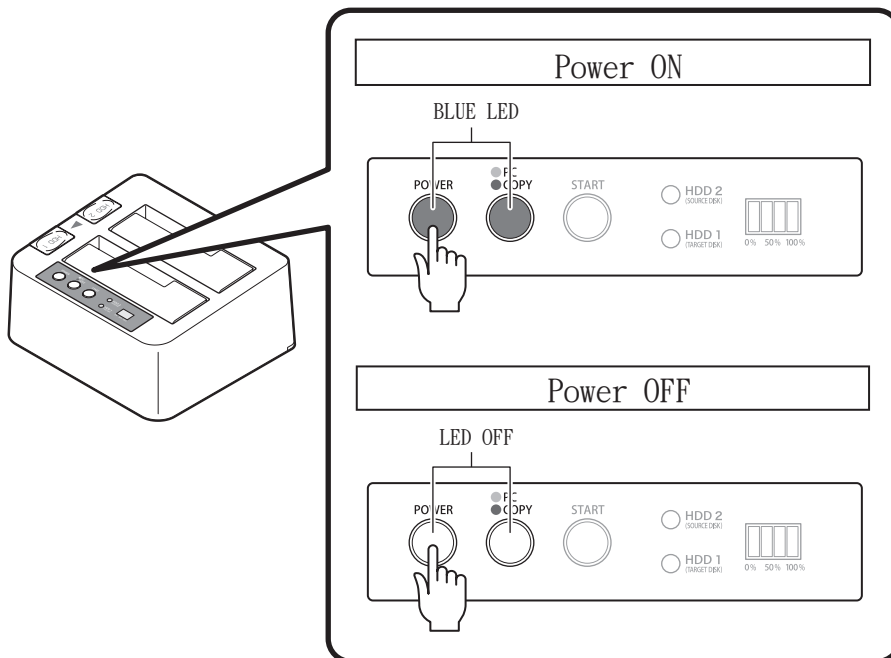
Connect the PC and power to start!



【Turn on the Power】

Press the button to turn on and turn off the power.

Please turn off the power before connect with cable.



【HDD Copy Function】

HDD docking station deliver an exact 1 to 1 , sector by sector disk copy.
No need to format the HDD,if there are system files already in the HDD.

⚠ Warning!

~Before Copy Operation~

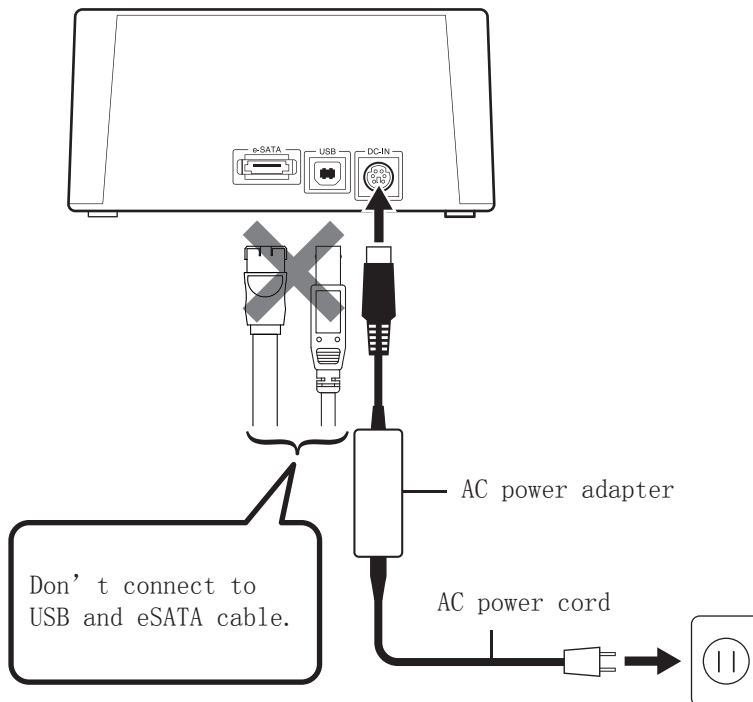
Please read the operation manual before start copy operation, there might cause damage to the HDD, if the operation is wrong.

When in following situations, might cause the copy operation failed,

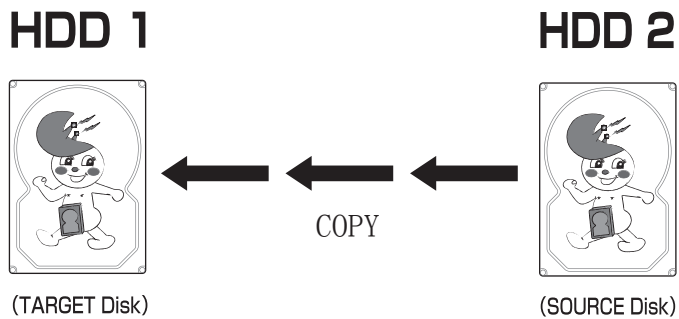
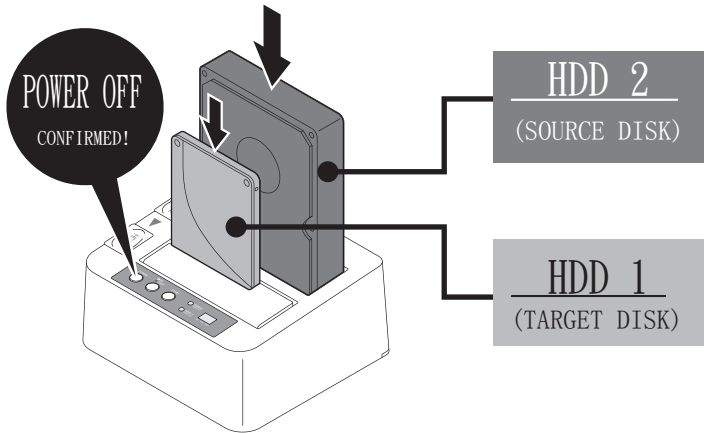
- Broken sector in HDD
- Unrecognized HDD
- Others, unstable HDD

■ Operating instruction

1. Connect the power, but do not connect the PC with USB or eSATA cable.



2. After confirm the power is off,
insert the Source Disk into HDD 2, and insert Target Dick into HDD 1.

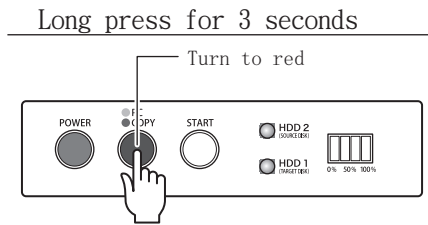
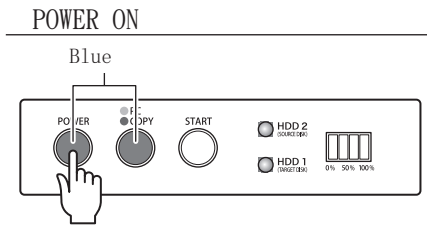


 **Warning!**

Please be careful with the correct slot for the TARGET and SOURCE DISK. It might cause damage to the HDD, if it's reversed. And the capacity of TARGET DISK should be bigger than SOURCE DISK or the same. If use the same capacity please choose the same brand, otherwise there might be some error between different brands.

3. Press the button to start! (①)

Press PC/COPY button for 3 seconds, LED will turn from blue to red (②)

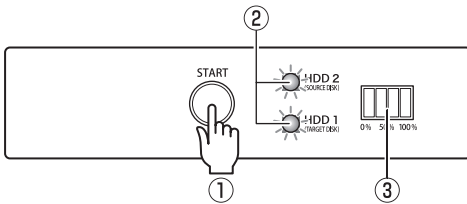


4. Press START button to start copy operation.

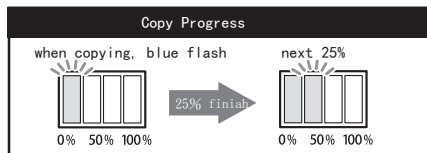
When in copy operation, HDD1/HDD2 light will be pink flash, and the Progress Status LED will be blue flash, and the Progress Status LED will indicate the finished copy status. Once finished, the Progress Status LED will be blue light and the bar is at 100%, and the HDD1/HDD2 will change from pink to blue light.

※Please turn off the power after copy operation finished.

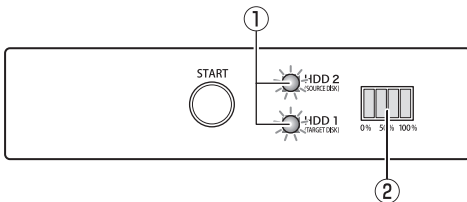
● Begin!



Press START button
HDD1/HDD2 LED- Pink flash
Progress Status LED- Blue flash



● Finish!



HDD1/HDD2 LED- Pink flash to Blue light

Progress Status LED- Blue light, status bar at 100%

※Please turn off the power after copy operation finished.



©The copy operation time required differs from different HDD.

~Reference~

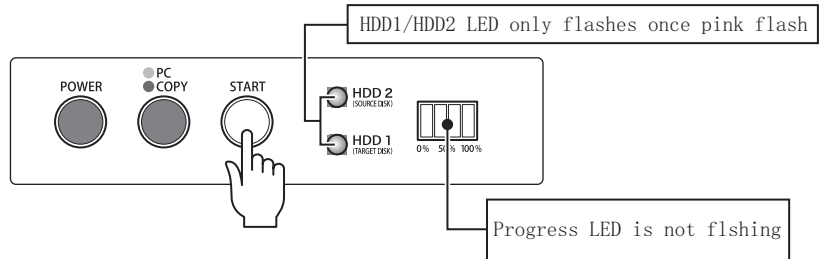
In our testing, 500GB HDD requires 150 mins, average transfer rate up to 55MB/sec.

【Copy Operation-Technical Support】

Following are the reasons might cause the duplication process could not begin or disrupt,

■ Could not begin process

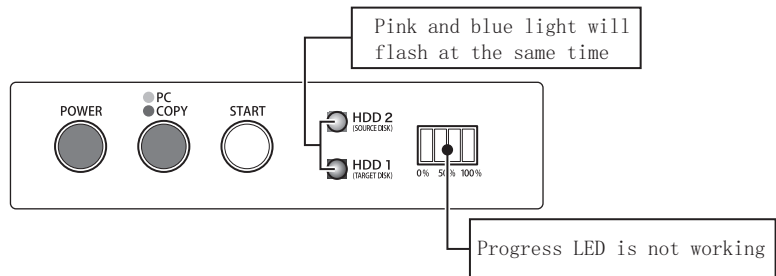
One of the HDDs might have broken, or the TARGET HDD is smaller than SOURCE HDD in capacity. Please change a HDD or bigger TARGET HDD.



■ Process disrupted

The process will disrupt if there is error in one of the HDDS.

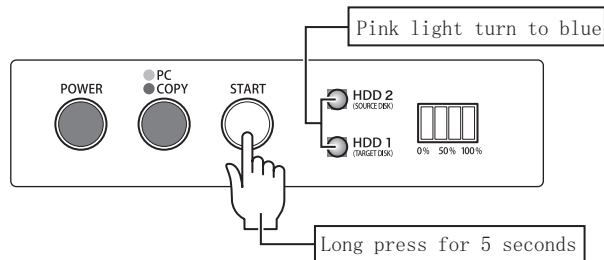
Please turn off the power and check the HDD.



■ Cancel the duplication process in the middle

Press the START button for 5 seconds.

It will start all over again next time, therefore do not stop the process in the middle if not necessary.



【FAQ】

Q:Maximum capacity of HDD?

A:Support HDD up to 2.0 TB in capacity.

Q:Does it support hot-swap?

A:No, please turn off the power before insert or remove the HDD.

It may cause damage to the HDD, if the power is on.

Q:What is the insertion rate of the HDD converter?

A:For the HDD stand converter, 10,000 times.

For HDD, should consult with the HDD manufacturer.

Q:Is the HDD stand converter bootable?

A:Through eSATA connector is bootable, but depends on environment.

【FAQ- Copy Mode】

Q:Could it copy HDD in different capacity?

A:Yes, but the TARGET HDD should always bigger than SOURCE HDD.

Q:Could it use the remain capacity in the HDD after copy operation?

A:In the copy mode it will copy all sector in the HDD.

For example, the SOURCE HDD is 500GB and the TARGET HDD is 1TB, the 500GB in the TARGET HDD will be exactly the same as the SOURCE HDD.

For the remaining 500GB in the TARGET HDD, could use in the Windows XP/Vista/7, but if in Mac OS, it could not be used.

Q:Could it copy HDD in differnt brands or transfer rates?

A:Yes.

Q:In the the Linux OS or others OS that HDD converter does not support, could it support copy operation?

A:The copy operation for this HDD converter is sector by sector, it will not recognize the systems files and data formats is the HDD. Therefore it could support copy operation. The same in capacity, manufacturer and series HDD could be used as boot disk, but if the HDD is in different capacity, we could not guarantee.

Q:If there is broken sector in the HDD, could it support copy operation?

A:No.

Q:Could it copy the HDD with the same capacity but different manufacturer?

A:There might be sightly different in different brands HDDs, but the TARGET HDD should always bigger than SOURCE HDD.

Q:Could it copy SCSI HDD?

A:No.

Q:Could the HDD built-in the PC uses USB cable to connect with the HDD converter to copy?

A:The HDD which built-in the PC should take out from the PC to use the copy operation funtion.

Q:If the data in SOURCE HDD is only small amount, could it copy to the smaller capacity TARGET HDD?

A:No, it will copy those sectors that have not been used. The TARGET HDD should always bigger than SOURCE HDD.

Q:How much time does it need to copy HDD?

A:The copy operation time required differs from different HDDs, about 2GB-3GB per min.

Q:Does it need to partition the HDD before copy operation?

A:No need to, when copying it will eliminate the old partition and data formats in the TARGET HDD.